

ENVIRONMENTAL RISK INTELLIGENCE

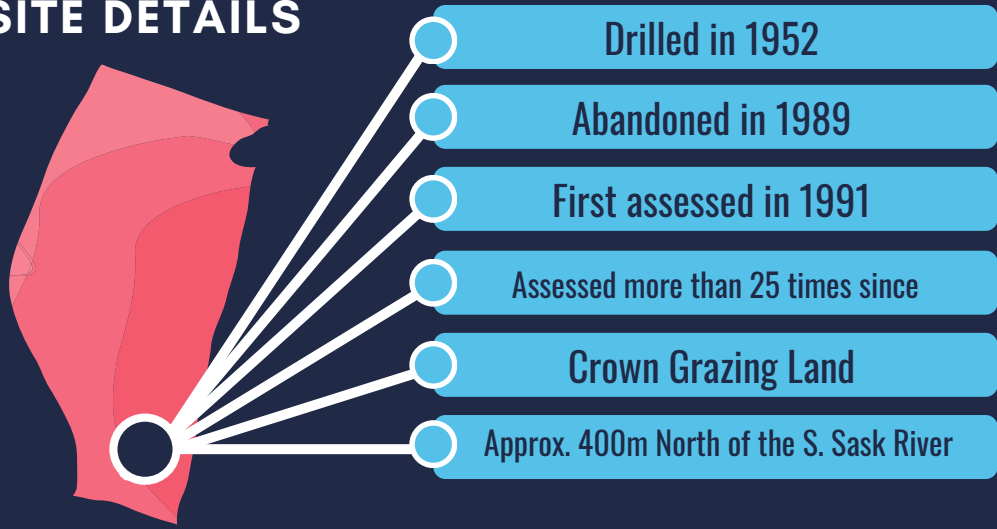
Applying Environmental Risk Intelligence & Data-Driven Solutions to Make Complex Site Closure Simple



Case Study Project: **Bow Island Site-Specific Risk Assessment**

#ClosureMadeSimple

SITE DETAILS



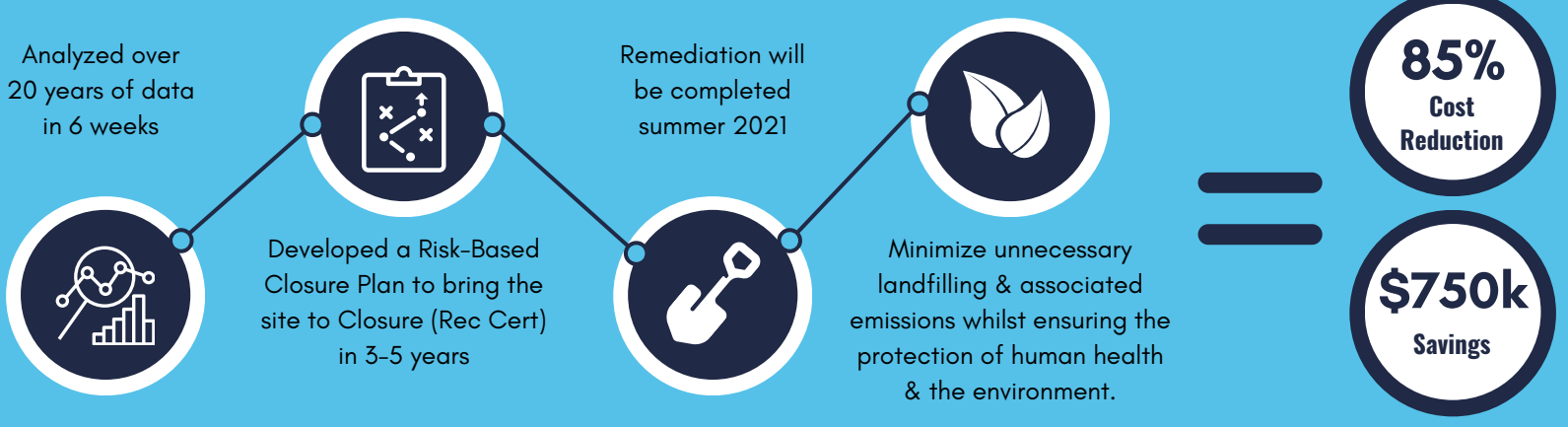
Contaminants of Potential Concern (COPC's) included:

- Salts
- Sterilants
- Petroleum
- Hydrocarbons
- Metals

Why projects historically fail

- 1 Risk Aversion**
Risk probability is rarely zero, a challenge for regulators & professionals
- 2 Analytical Limitations**
Limited or low quality data or analytical constraints
- 3 Lack of Focus**
Where data is sufficient we may lose site of the goal.....CLOSURE

360'S INNOVATIVE AND PRAGMATIC APPROACH CORRELATED YEARS OF ENVIRONMENTAL DATA TO EFFECTIVELY ASSESS NATURAL CONDITIONS AND RECEPTOR RISK



For more information on this or other ERI projects, please call:

Dave Lamberton
Manager of Business Development
(403) 919-8693